



City Office : No. 61, 1st Floor, 3rd Main SBM Colony, Anandnagar, Bangalore - 560024 | Ph: +91 80 2333 9999

City Office : No. 61, 1st Floor, 3rd Main SBM Colony, Anandnagar, Bangalore - 560024 | Ph: +91 80 2333 9999

We have pleasure in introducing ourselves as one of the premier pre-cast concrete product manufacturing company in Bangalore with strong execution team, having its own manufacturing set-up, transportation facility, experienced, enthusiastic workforce in Bangalore.

We manufacture customized product with assured quality within specified time frame of customers. Qualified professionals are at the top of every functional area of Everest Developments Private Limited. Hundreds of skilled, semi-skilled and unskilled workers are our strength. Our quality assurance team shows their excellence in their field.

A brief list of some assignments successfully executed by us:

a) Bangalore International Airport -

- i) We have executed 40mm paving tiles supplying and execution job covering 60000 square feet area at arrivals as well as departure gate of Bangalore International Airport.
- ii) Compound Wall - 5 Km and Electrical Chamber - 1000 nos., Lamp Post Foundation - 700 nos. and many other items through L&T and various contractors.

b) Prestige Shantiniketan - We have supplied entire requirement of kerb stone at the commercial as well as residential complex in the year 2008-09.

c) Prestige Golfshire -

- i) Cable trench supplying and execution work measuring 15 Km (appx.)
- ii) In addition we have supplied Coping Slab measuring 5 Km and executed
- iii) Supply of Fins - 7,000 nos. at the site
- iv) Supply of Kerb Stone - 20,000 nos. with many varieties
- v) Cover Slab measuring appx. 15000 nos. supplied

d) Embassy boulevard -

- i) We have supplied and executed 1.80 km compound wall of 2.5 Mts height.
- ii) We have supplied and executed Precast RCC Panels for Car Porch Roof Slab of 150 Car Porches for each Villa.
- iii) We have supplied and executed precast RCC Panels Villa Roof Coping Slab

e) Brigade Enterprises -

- i) Supplied 60 mm Pavers, Kerb Stones And Cover Slabs - huge quantity.
- ii) Supplied and installed Precast RCC Trench in Brigade Lakefront Project.
- iii) Supplied and installed Precast RCC Customised Compound Wall in Brigade Golden Triangle Project.
- iv) RCC Cable Trench in various Projects.

f) Manyatha Tech Park - supplied and installed precast RCC Drain for Fire Tender load (40 tons) of size 1500(W) x 2000(D) on Live road in Manyatha Campus.

g) RMZ ECO World - Supplied and erected customized Precast made to order RCC Median for Spine Road of Eco World Campus.

h) Bangalore Metro - We supplied TWIN RCC Cable Trough - 1650 Rmt. and Twin Ferro Cable Trough - 900 Rmt.

i) Embassy Tech Village -

- i) 8 Km RCC Drain and Cable Trench (Supply & Laying).
- ii) HDPE and Hume Pipe - 10 Km (Supply & Laying).

j) KPTCL - Supplied Cable Trench & Drain through various contractors - almost 5000 Rmt

Drains



Drains stacked at Factory



Drains stacked at Work-site



Drains excavation in progress



Concrete levelling in progress

Drains



Laying of Drains completed



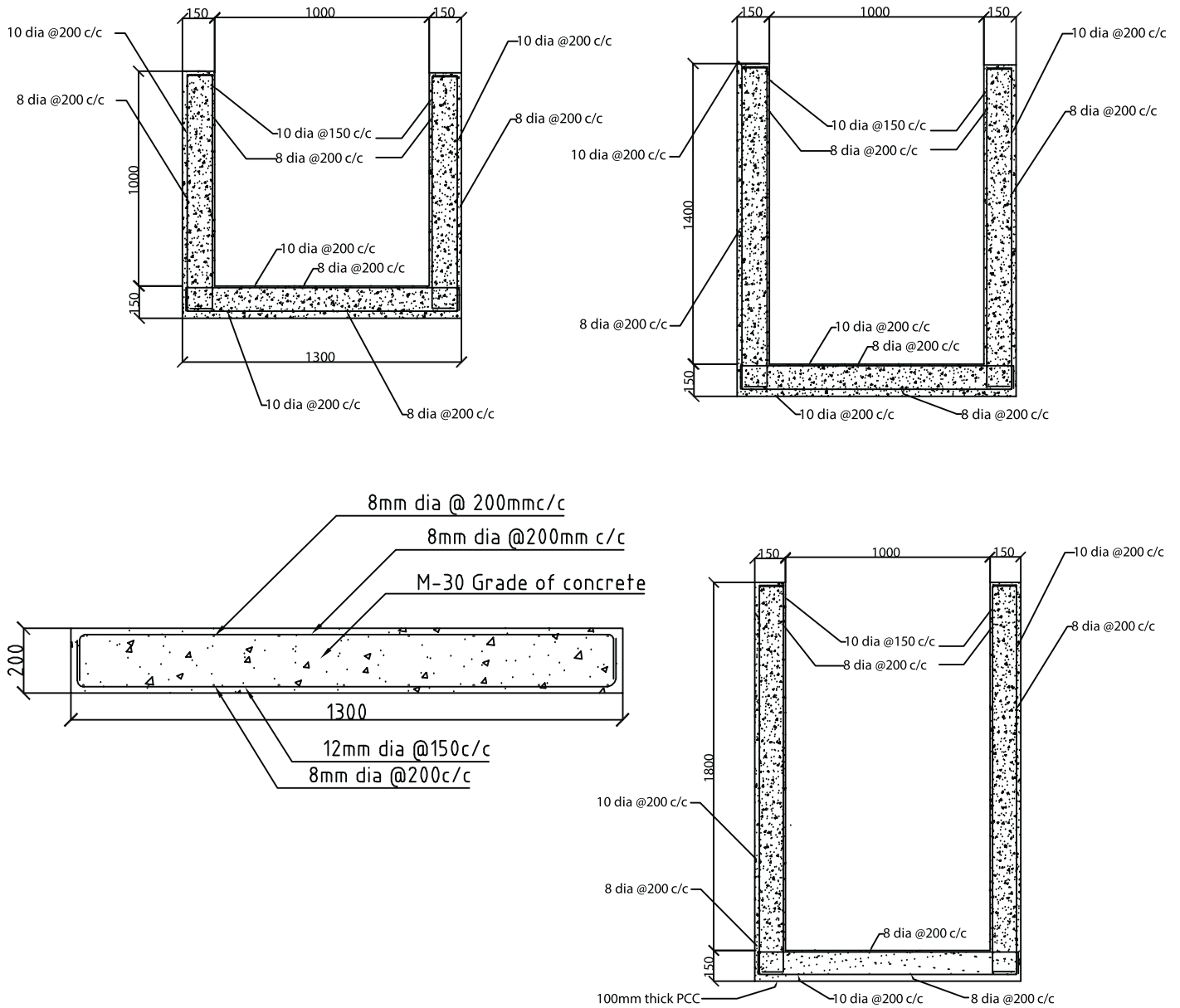
Joining of drains in progress



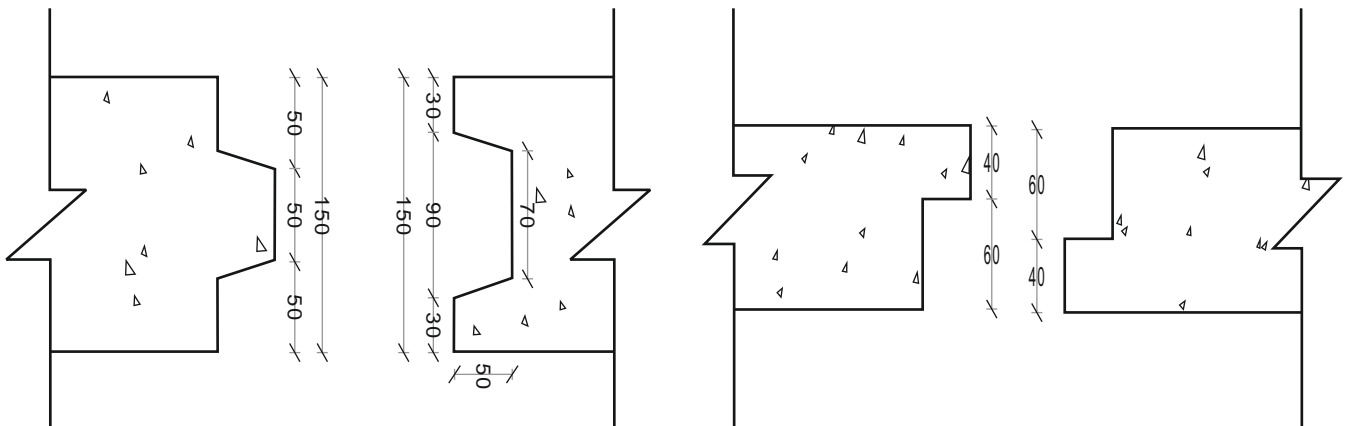
Cover Slab suitable for Fire Tender load being laid over hydrant



MS Drain Cover fabricated by Everest after laying



Jointing Groove for Installation



Execution



Loading of Trenches at factory by electrical Gantry



Unloading at site in progress



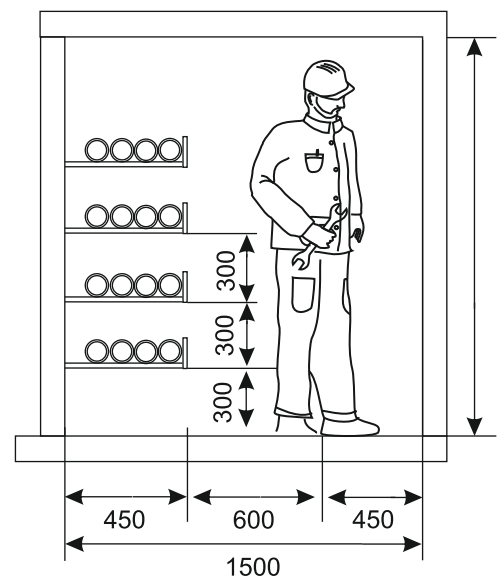
Trench sections being aligned before joining



After completion of joining



Negotiating Curvature



Cable Trench typical section



Drain 700x1000mm
150mm thick



Drain Sider View



Trench Section 700x1000mm



L- Drain



L Drain 600x500mm, 100mm wall, 125mm base

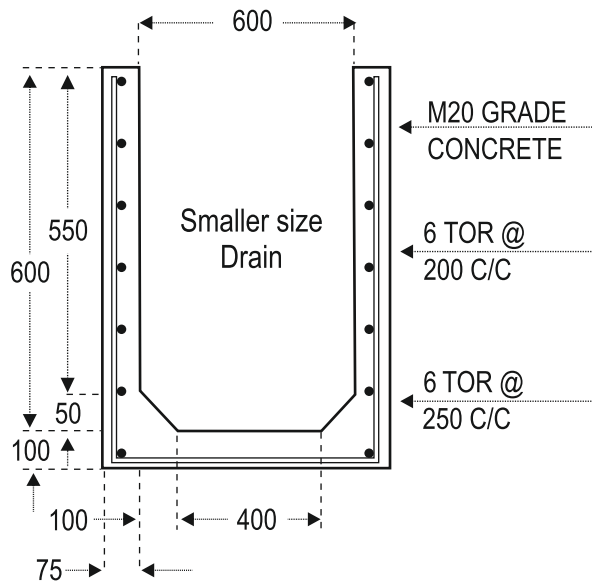


Drain Lifting by crane

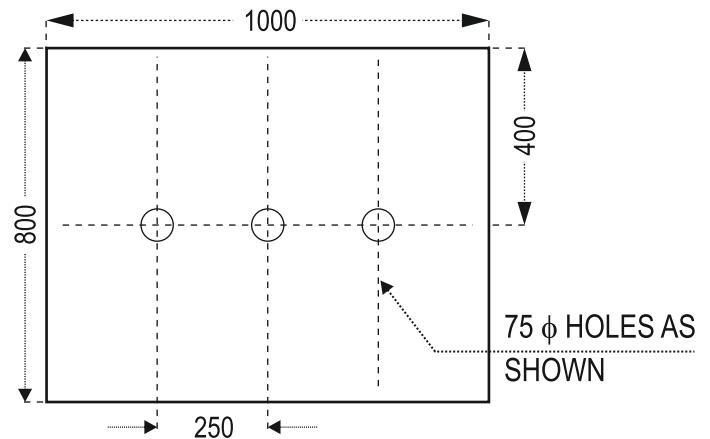


Stock Yard

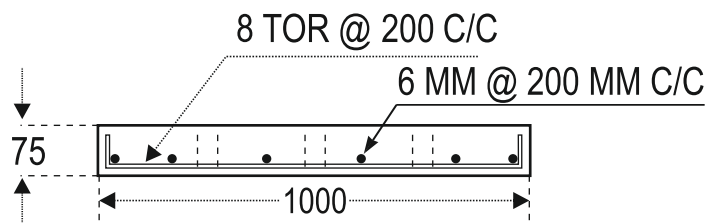
Typical Details of Drain and Perforated Cover Slabs



DRAIN CROSS SECTION

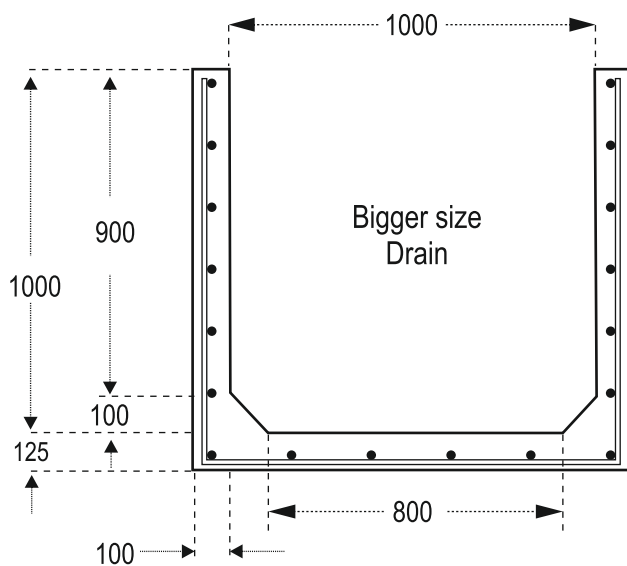


PLAN

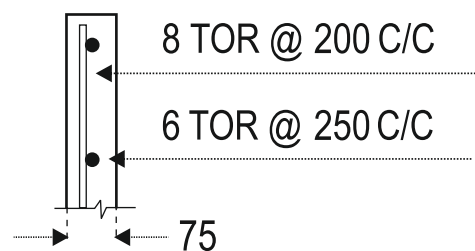


Section

PERFORATED COVER SLAB DETAILS



DRAIN CROSS SECTION



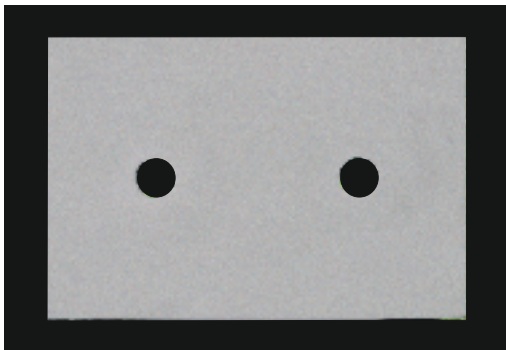
**WALL REINFORCEMENT
TYPICAL DETAIL**

Note:

1. Reinforcements will continue till ends for joints.
2. Shuttering for walls at joints at site will be on both sides and floor concrete to be laid and finished neatly.
3. Excavation to be carried out using excavators. Only steel shuttering to be used for casting.
4. Handling of units will be by mobile gantry only.
5. Compacted sand 50mm thick shall be used for the sub grade.
6. M20 concrete will be used all over.

Drain Cover Slabs (Reinforced and Laminated finish)

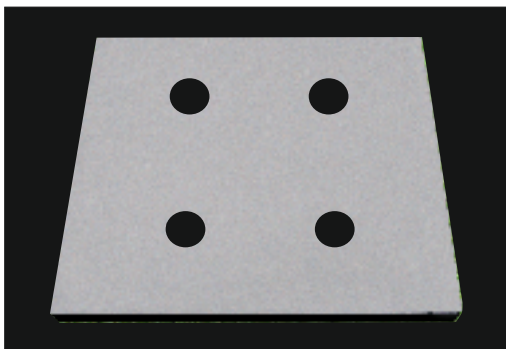
(All Holes 75mm ϕ)



600 x 425 - 70 mm thick Cover Slab



1000 x 800 - 75 mm thick Cover Slab



1000 x 1050 - 75 mm thick Cover Slab

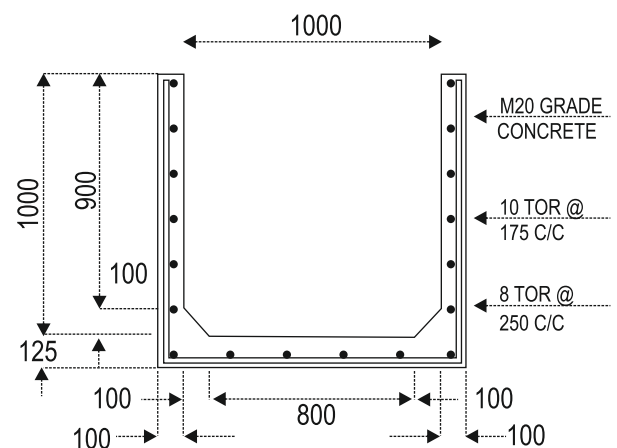


750 x 600 - 75 mm thick Cover Slab

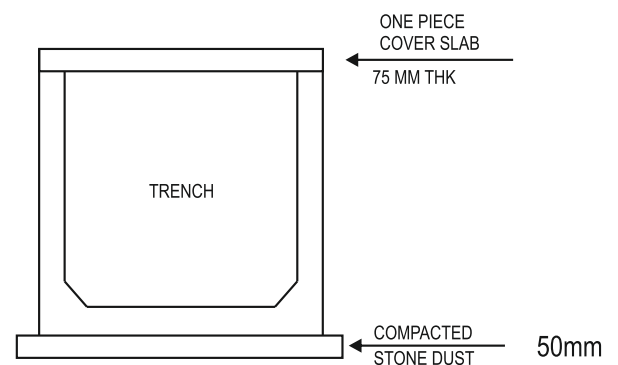


Cover Slabs laid in position

Typical Details

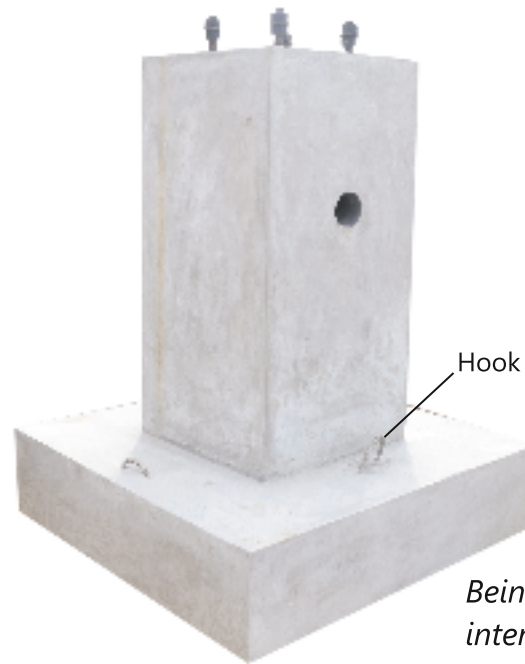


TRENCH CROSS SECTION



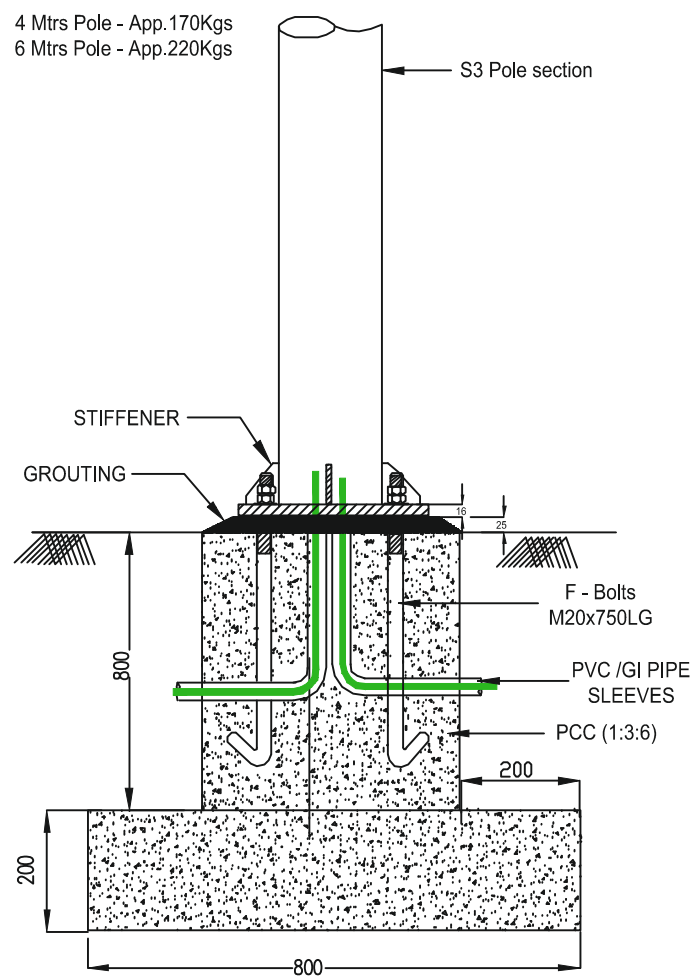
PLACEMENT OF TRENCHES WITH COVER SLAB

Precast Lamp Post Foundation



Hook for lifting and placing in position

Being erected in Bangalore international airport expansion project



FOUNDATION DETAILS

Precast RCC Median

Specifications

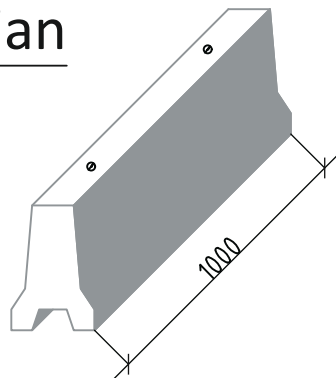
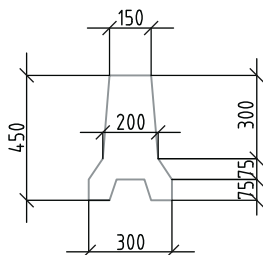
Precast RCC Median as per Drawing made at fully set precast Factory using Steel Formwork, M-20 Grade of concrete by vibro-compaction method, very good finish, well reinforced, design and details as per our photograph.

Advantages

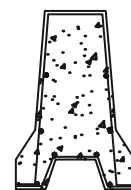
- We are Manufacturing in our fully setup Precast Factory, we are getting good finish, good quality of concrete, much more perfection than cast in situ
- Ready to lay materials
- Easy installation method, and less no of labour requirement
- On time completion
- Less activity in site
- Hazard-less site



Precast RCC Median



ISOMETRIC VIEW



Sectional Details

WRITE UP FOR EXECUTION OF FIXING OF RCC SCREEN AT SERVICE AREA OPENING

The Precast RCC Screen of 50 mm width of various sizes with different opening as per details given below of M 25 grade will be manufactured at EVEREST precast unit.

For Service area opening

The opening 6060x2600 will be divided in three part of each 1750x2600 at both end and 2560x2600 at central portion. RCC Screen of 850x575 sizes with 200 mm sq opening and rib of 50/75 mm width will be used for covering of this opening. Number of RCC Screen and clearance required for fixing of same shall be as per sketch enclosed herewith. The opening has to be finished and handed over to us to line, levels & correct dimensions.

Fixing of Screens at Site

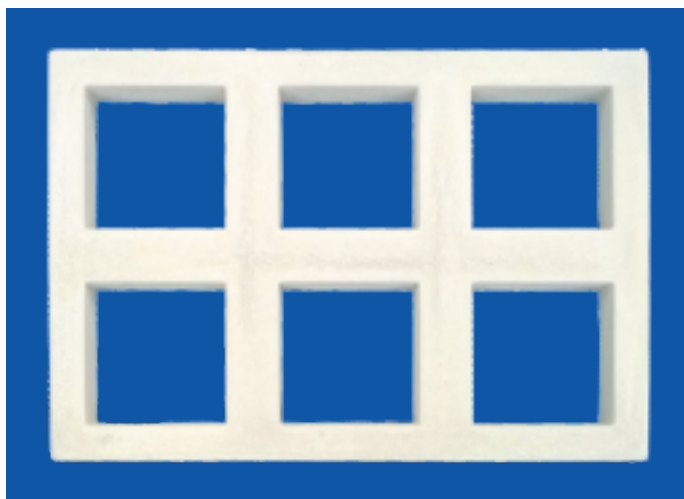
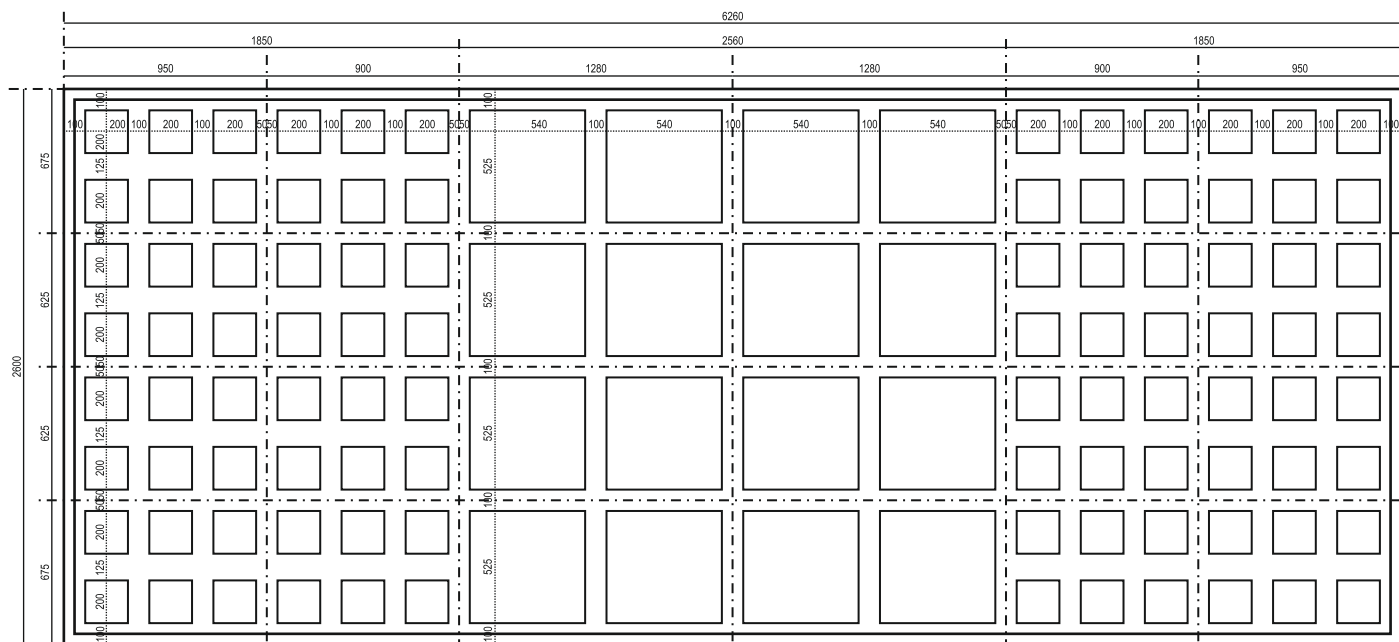
One Screen will be fixed at site in a combination of structural steel and RCC Precast Panels Suitable anchors shall be used to secure the steel channels to concrete suitable safety measures shall be used at site as required for the work.

Floor opening at working place shall be covered by steel gratings supported from floor or by scaffolding pipe depends on site condition. Vertical steel member will be fixed at four places for preparation of three segment and also conveniences of fixing of Screen in position. Fixing compound as required and supplied by Tata Housing for Screen fixing shall be used. Steel member so proposed will be adequate enough to take the wind load as per IS 875

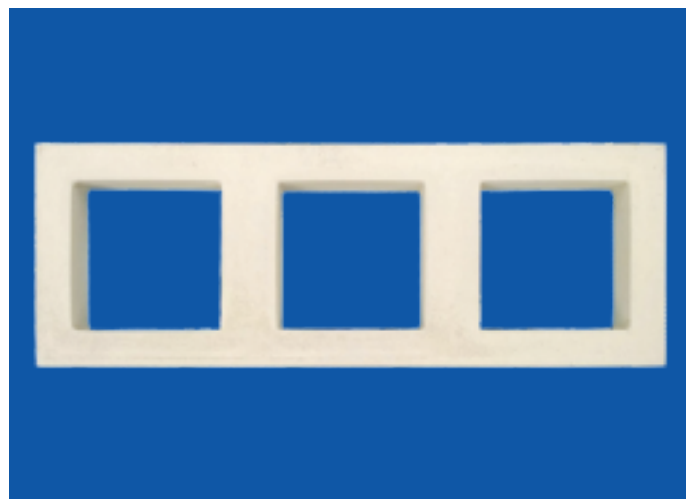
The Structural steel shall be painted with 2 coats Zinc chromate primer with anti Corrosive reputed make white colour 2 coats.



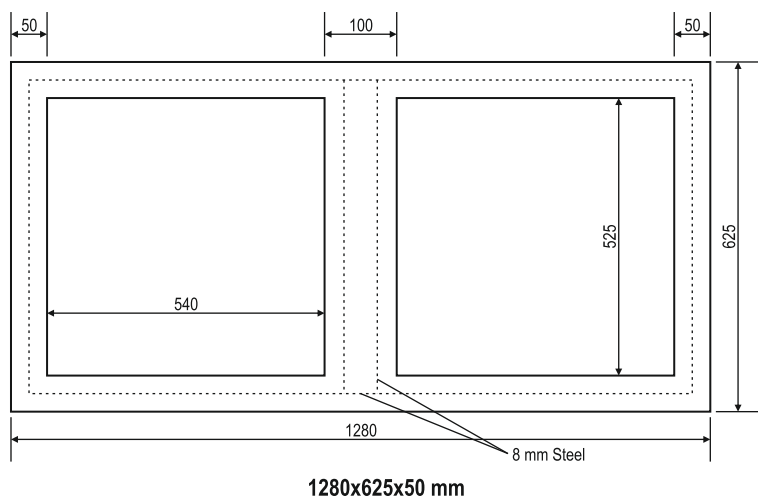
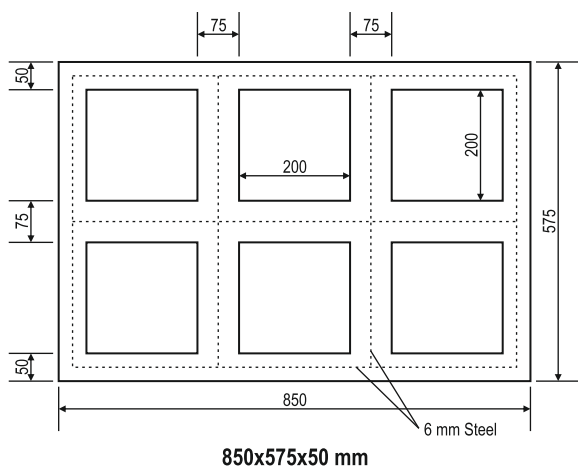
Dimensions may vary slightly for chemfering to demould



SMALL SCREEN



BIG SCREEN

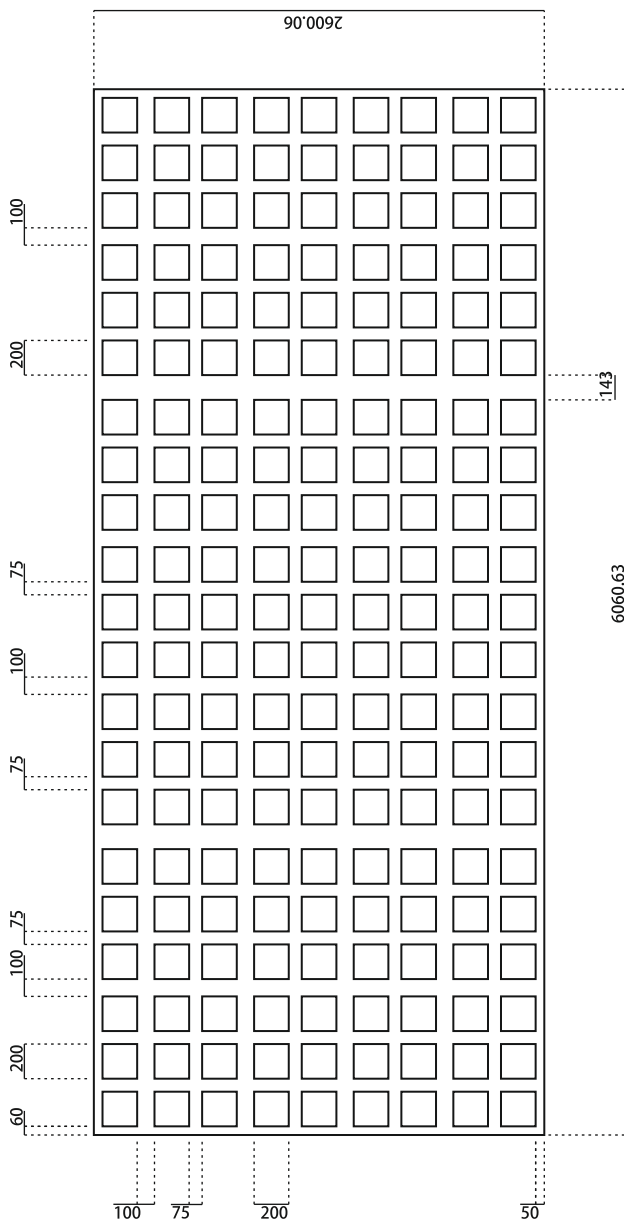
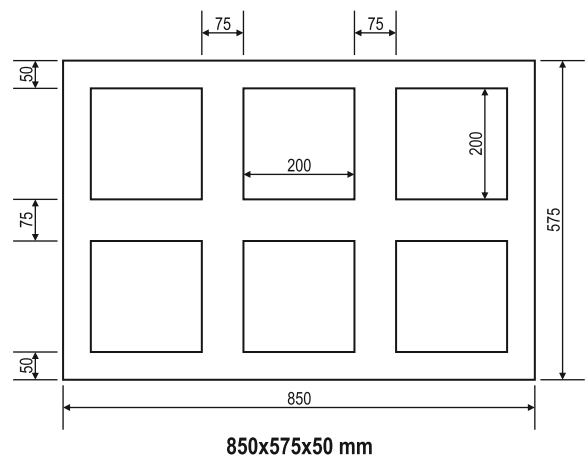


Facade Concept (Screens) - Close View



Frame size: 850x575 (outer), Exterior frames: 50mm,
Internal Frames: 75mm (well reinforced & all welded)

SMALL SCREEN



Screen

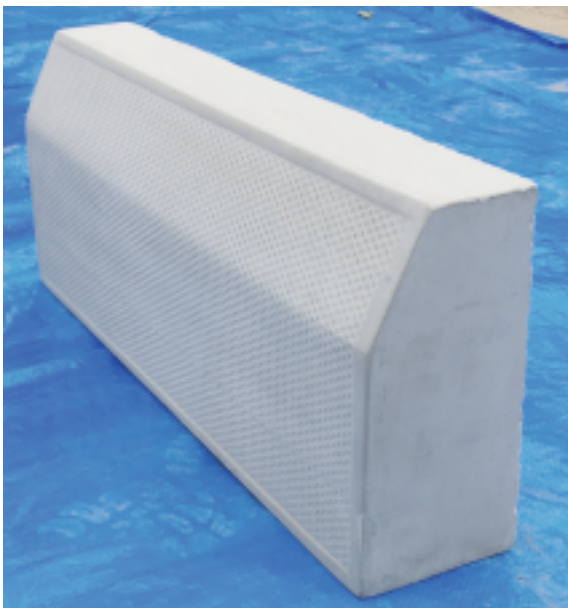


Screen manufactured by Everest after fixing at site



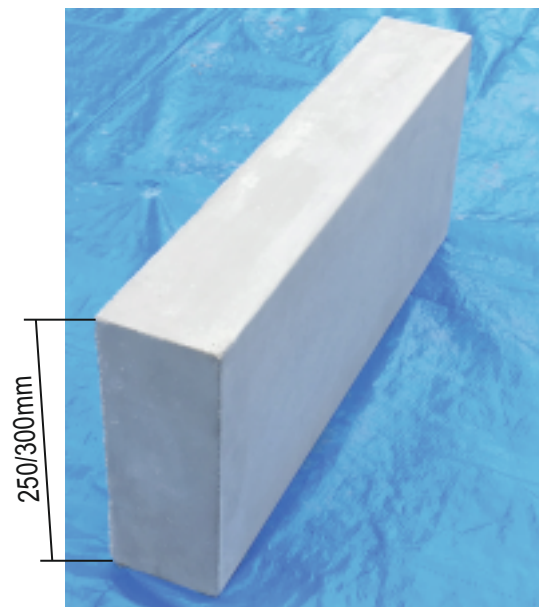
Screen after fixing over service area

Pimple Finish Kerb



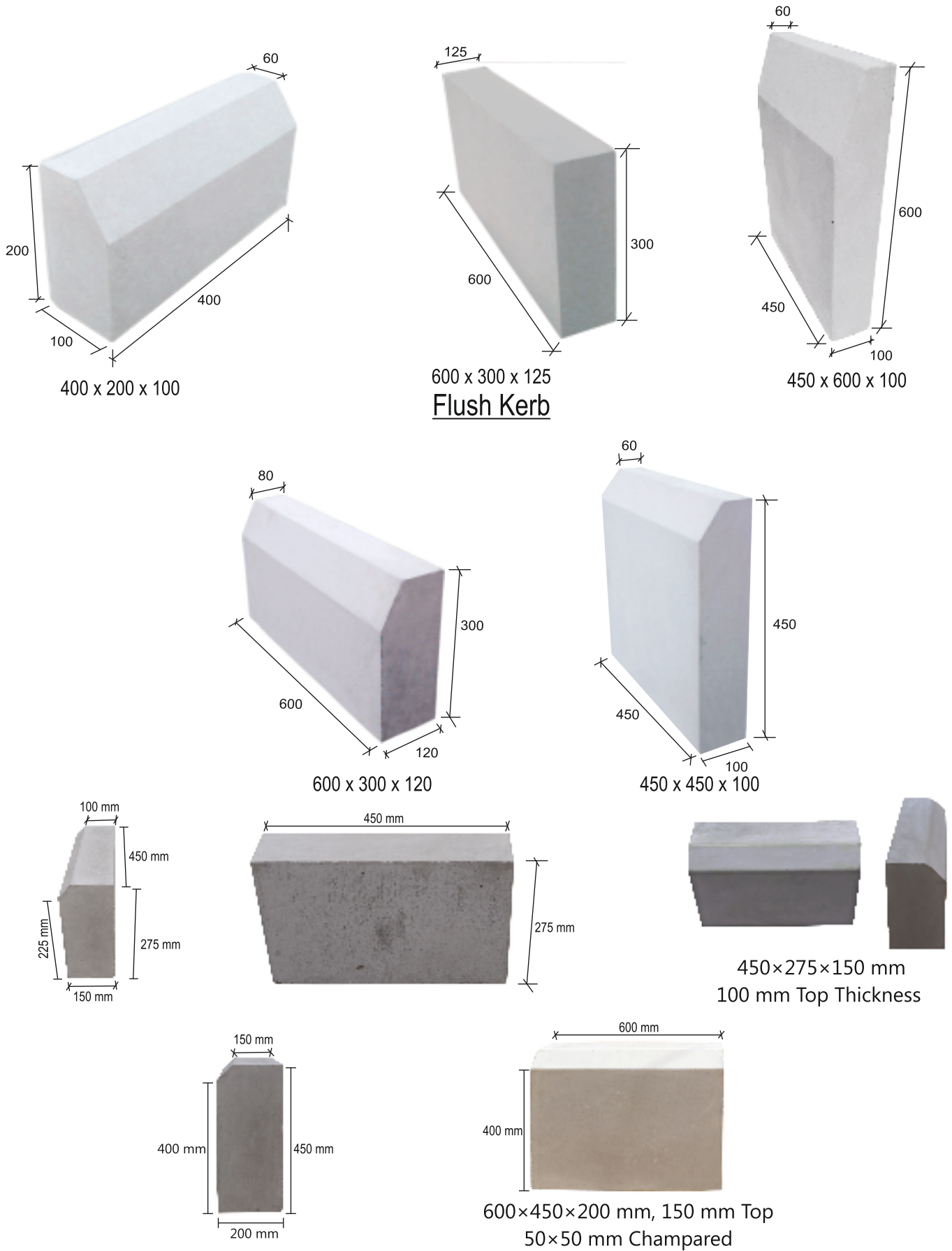
600x300x120 mm (75x40mm champered)

Flush Kerb



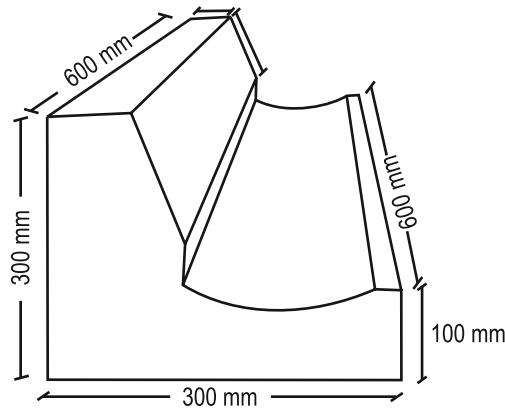
600x250/300x100 mm

Kerb Stone (Very Good Finish)

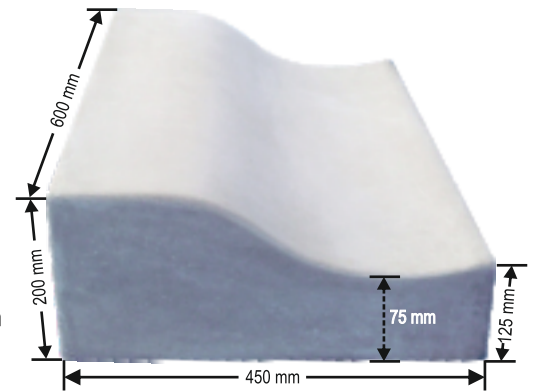


L Kerb

Specification : M20 concrete, made out of Steel form work, vibrated over 30 ft long vibration table. After deshuttering curing is done before despatch.

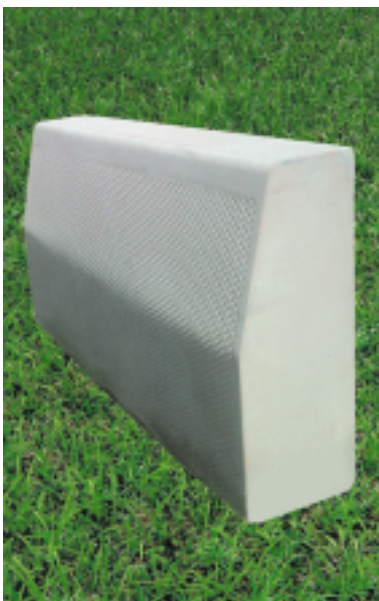


a) Very effective product b) Less cost of laying

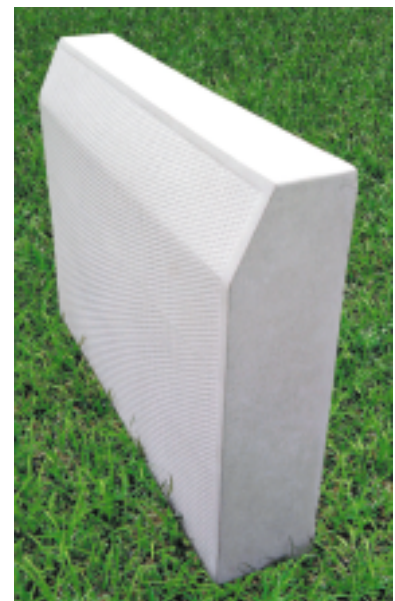


Kerb (made to order)

Dot finish Kerb Stone



Height: 300 mm
Length: 600 mm
Bottom thickness: 120 mm
Top thickness: 80 mm



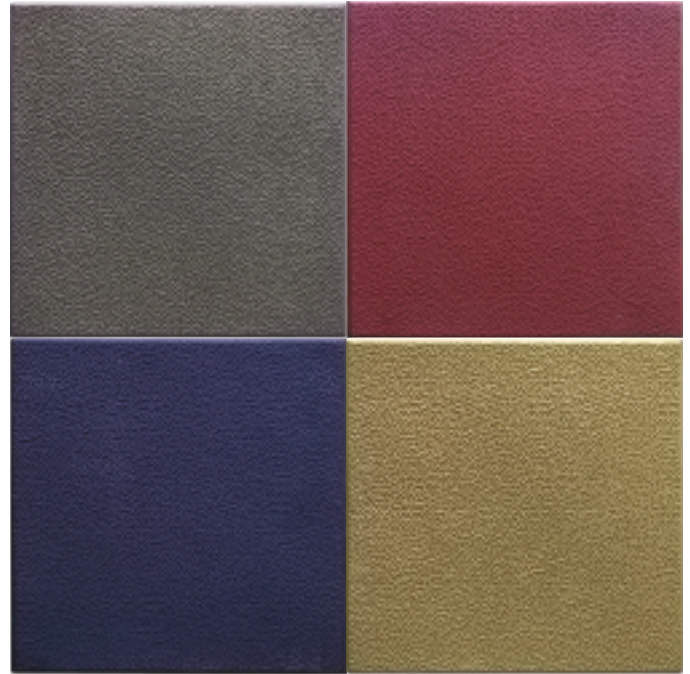
Height: 450 mm
Length: 600 mm
Bottom thickness: 120 mm
Top thickness: 80 mm

Anti-skid Rectangular & Square Pavers

200×200, 80mm thick, good for road work, will attend fire tender load. Base with compacted sand & sub base of WBM.

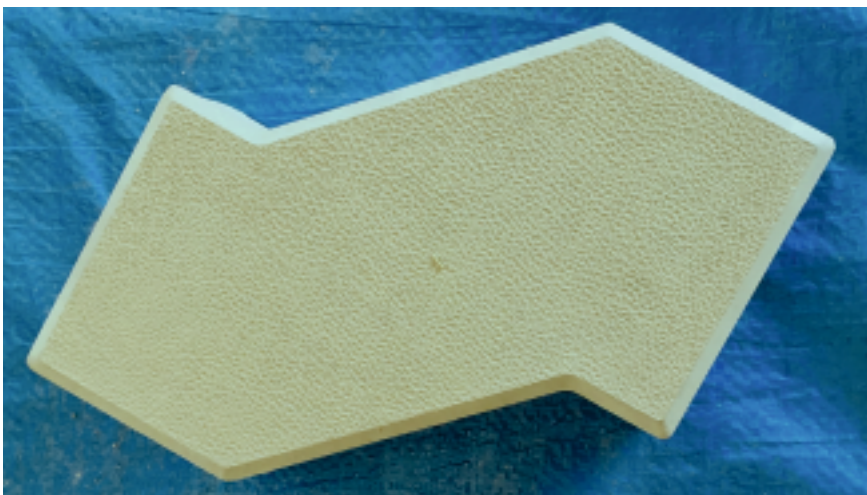


200x100x60 mm

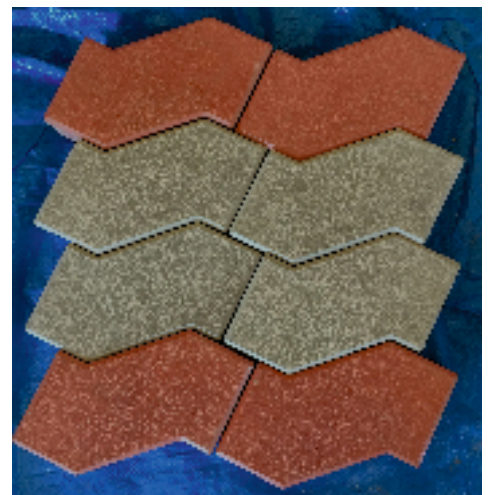


200x200x60 mm

Anti-skid S Pavers 60 mm

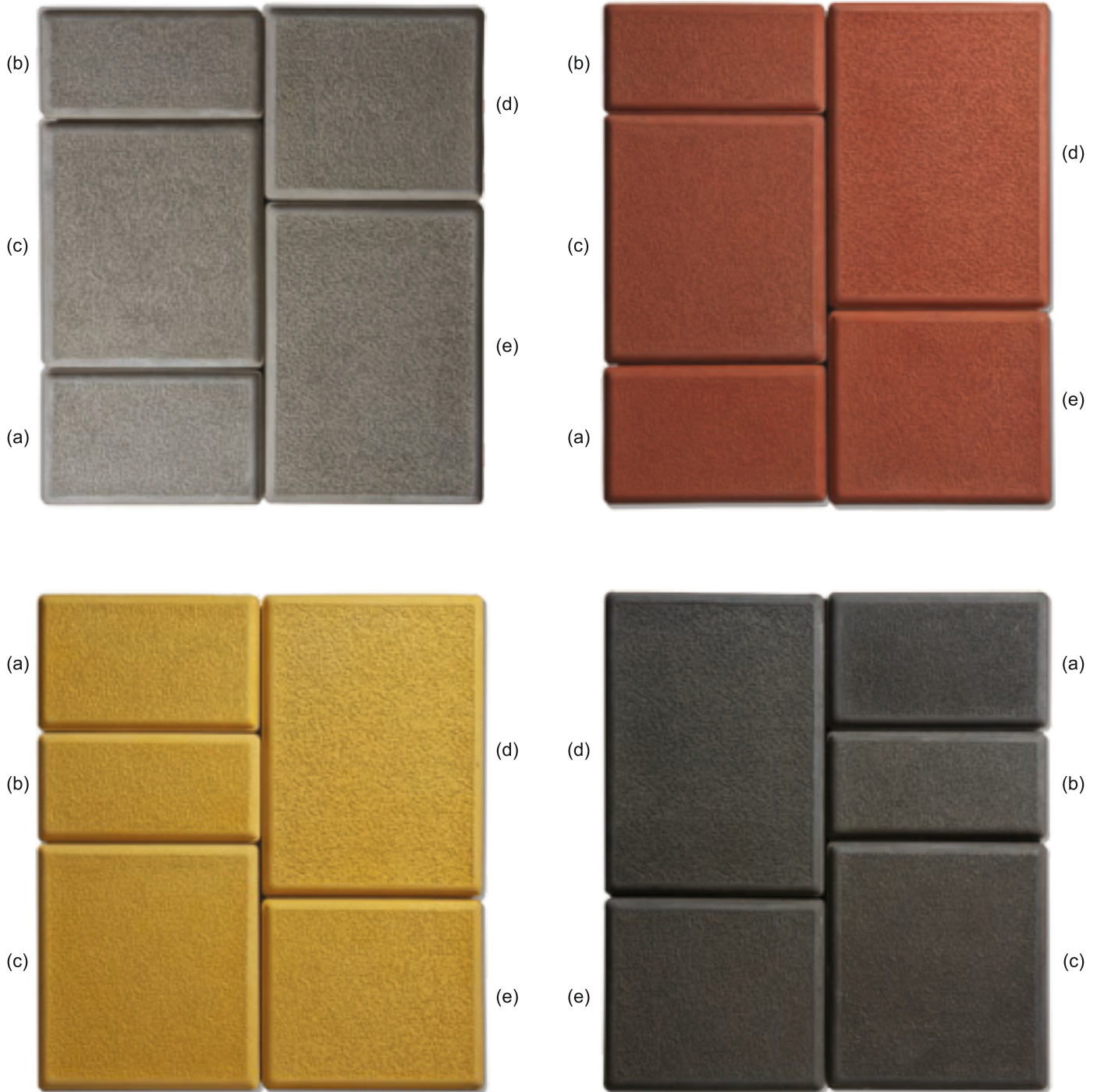


205x100x60mm



S-Pavers 60mm, Colour Pattern

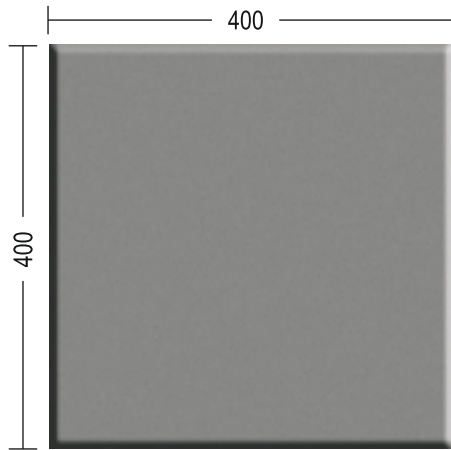
5 Series Concrete Pavers (M 40)



- Made from M-40 grade concrete using rubber mould as form work & vibrated on 30 feet table vibrator.
- Finishing is excellent since rubber mould is used as form work.
- A special treatment is done on top surface to make it anti-skid.
- The different sizes with thickness of 60 mm are
 - (a) 200 x 125 mm (b) 200 x 100 mm (c) 200 x 225 mm (d) 200 x 275 mm (e) 200 x 175 mm
- Strong enough to bear the load of Fire Tenders

Flooring Series

Square Flooring Natural Rock Finish



40 mm thick

Pavers for Car Drive (Antiskid)



500x200x60 mm thick



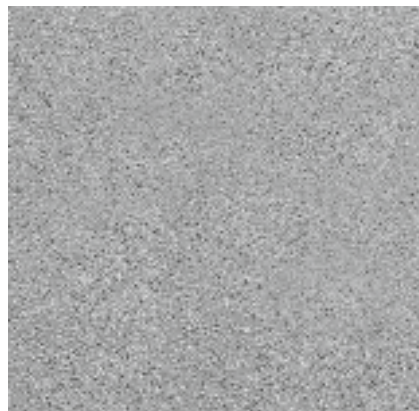
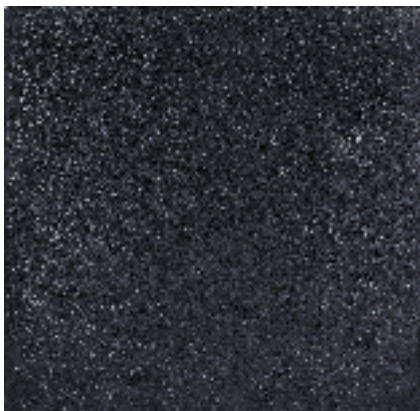
600x300x60 mm thick



300x150x60 mm thick

Anti-skid Flag Stone

(Two by two 60 mm thick easy to lay pavers laid over compacted sand bed)



600x600x60 mm

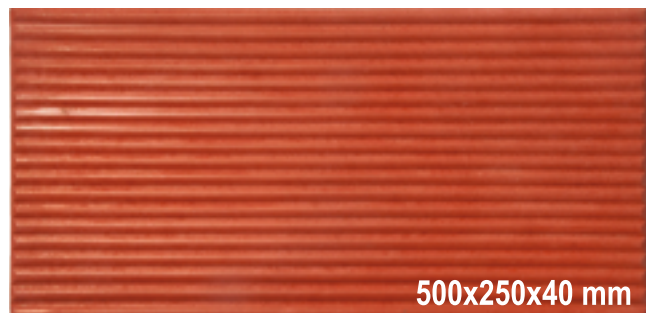


Anti-skid similar
as shot blast

Rock & Wave Design Concrete Pavers (M 40)



400x400x40 mm



500x250x40 mm

Specification : M40 concrete, mother mould is made in the form of wooden pattern. Then transformed to ABS form work by thermo-forming machine. Concrete is vibrated over 30 ft long vibration table. After de-shuttering curing is done before despatch.

Laying Pattern



S Pavers



Square Pavers
200x200x60mm

Pavers



Flexi Pavers after laying



Pavers after laying

RCC Electrical Junction Box for 2nd Airport Runway, Bangalore



400x400x400 mm, Walls 100 mm (clear opening)



Perforation for cable joint

Precast RCC Electrical Chamber for Aircraft Load capacity

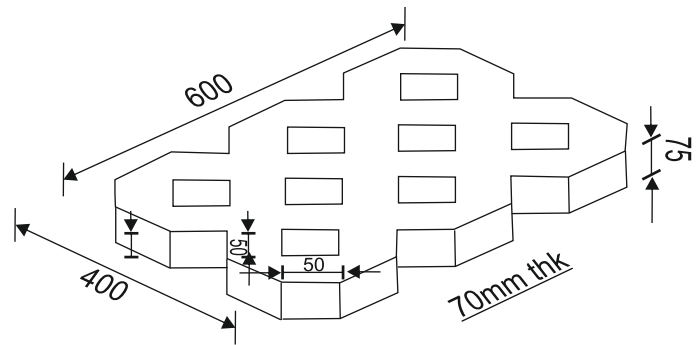


Raft 1750x1750x300mm, 800x800x600mm Clear opening with 300mm thick wall

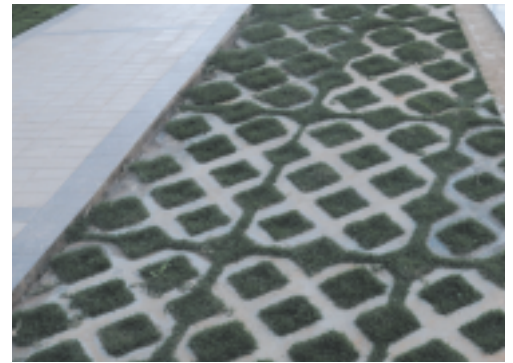
Grass Pavers with or without Reinforcement



2.58 sq.ft.

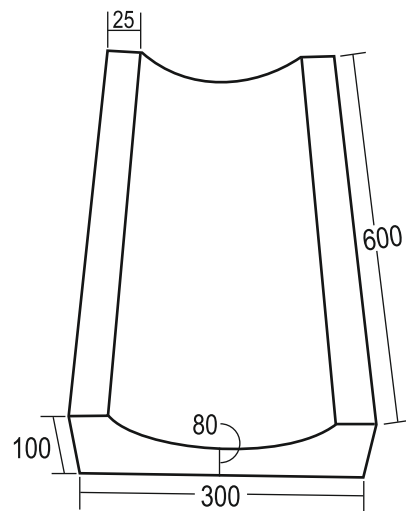


Ready for Despatch



After Laying

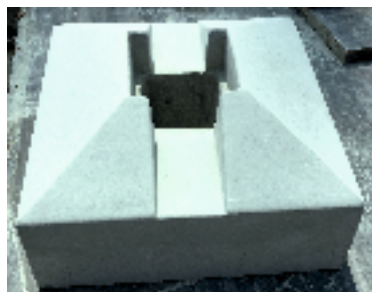
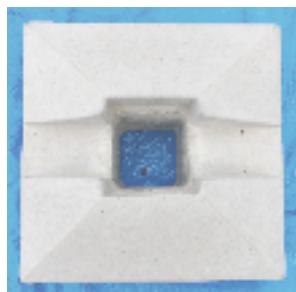
Ready to Lay Precast Surface Drain



NOTE

Most of the items specified here are Precast Concrete, requires precision engineering & curing. Please order in advance for on-time delivery.

Precast Compound Wall constructed at 2nd Airport, Bangalore



Precast RCC Coping Stone for Compound Wall (300x300x150mm)



Wall Panel - I (2830x1500x80mm)



Stock of Wall Panel - I (2830x1500x80mm)



RCC Column with base



For angle fixing
(Barbed wire)

Column - 250x250x3775 mm
Base - 470x570x175 mm



RCC Wall Panel WP-2 (2830x750x80mm)

Compound Wall



Compound wall erected at Griffith (USA) at Dodbalapur, North Bangalore

Major Advantages

- No labour required from customer's side
- Maintenance-free (no painting required)
- Single agency purchase benefit
- Much Lesser time required for erection, compared to conventional masonry walls

WE EXECUTE FIELD WORK FOR ORDERS OF MORE THAN 500 METRES



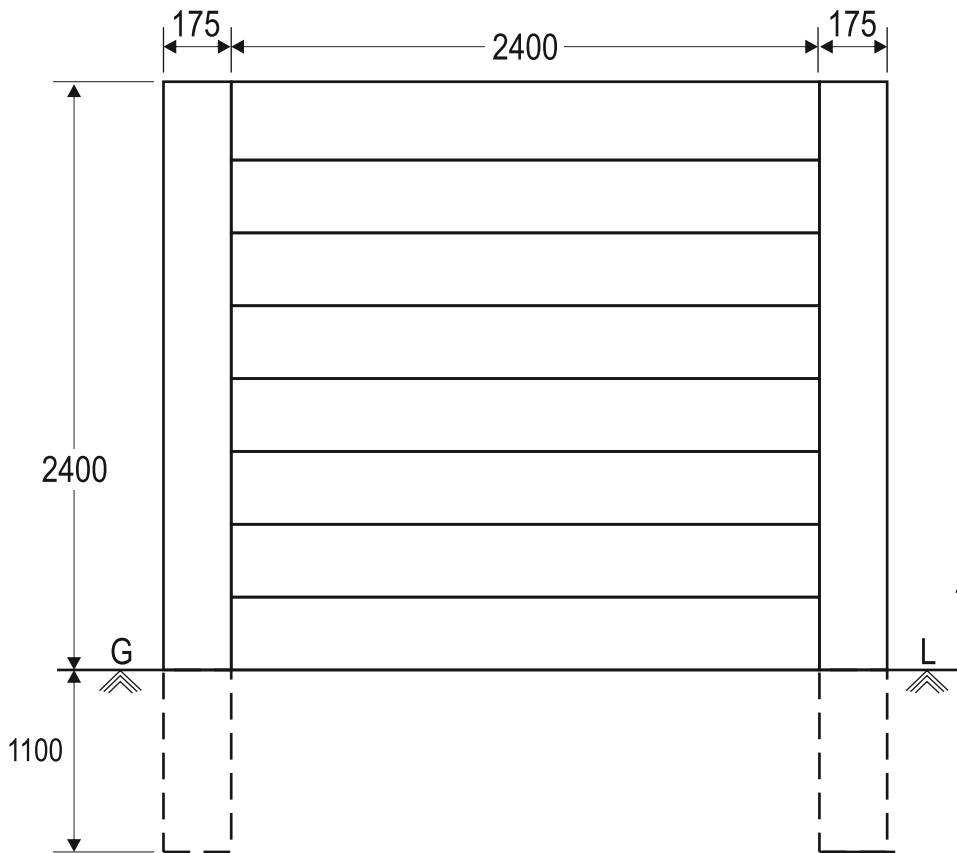
Compound wall erected at factory of TVS Motor Co. in Hossur, Tamilnadu



Column size: 3.5 metre long | Panel height: 600 mm each, 4 panels | Groove in column: 2.4 metre long

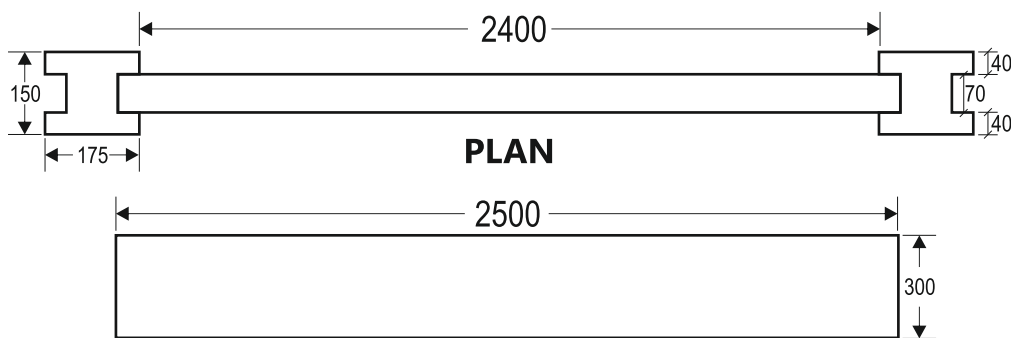
Actual photo : erected in a Villa project at North Bangalore

Typical Details Of Pre-Fabricated Compound Wall

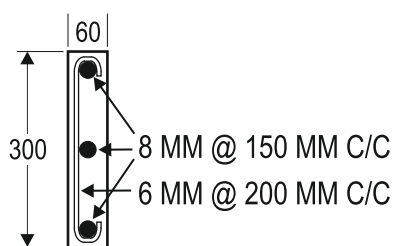


1. Customer may select 6 feet or 7 or 8 feet height above Ground Level
2. Height can be increased further by putting barbed wire fencing
3. Very less labour involvement at site
4. Low supervision cost

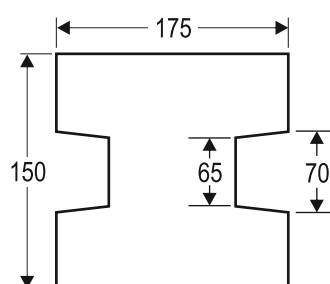
ELEVATION OF COMPOUND WALL



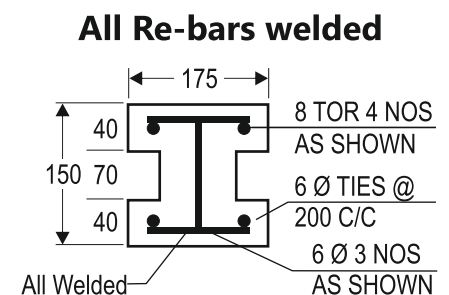
PANEL



PANEL CROSS SECTION



PLAN (ENLARGED)



PLAN

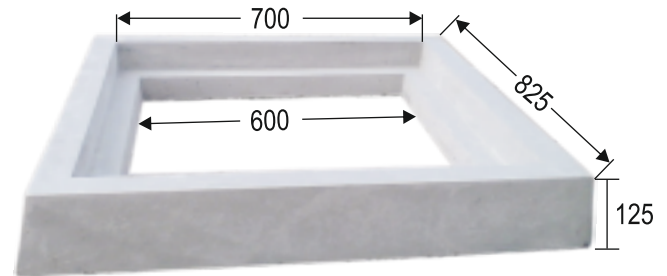
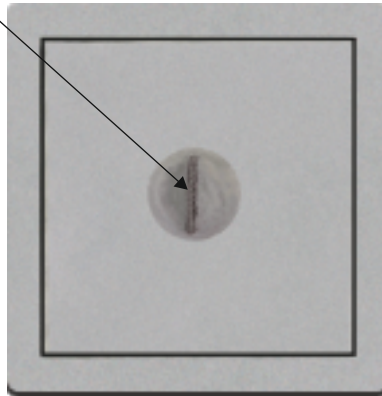
Other Products

Manhole & Chamber Covers

Undersunk hook

Clear Opening

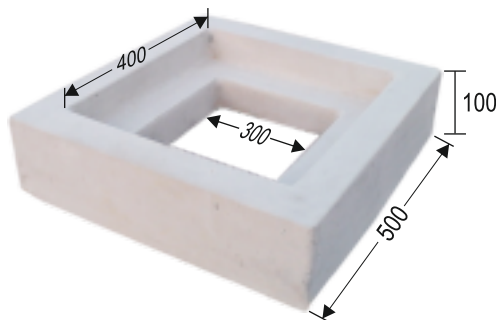
- a. 600 mm X 600 mm
- b. 400 mm X 400 mm
- c. 300 mm X 300 mm
- d. 250 mm X 250 mm



825 X 825 X 125 Chamber Frame

Cover Size - 700x700x70 mm

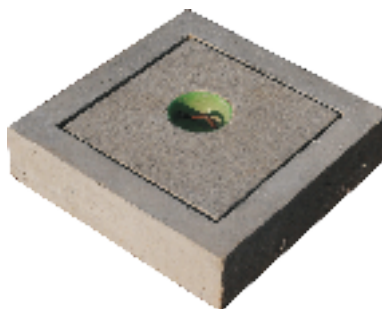
Opening - 600x600



500 X 500 X 100 Chamber Frame

Cover Size - 400x400x50 mm

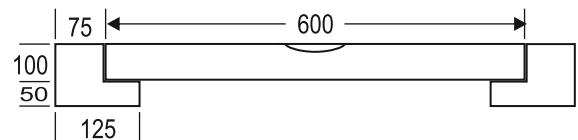
Opening - 300x300



400 X 400 X 100 Chamber Frame & Cover

Cover Size - 300x300x50 mm

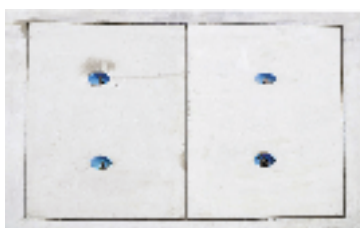
Opening - 250x250



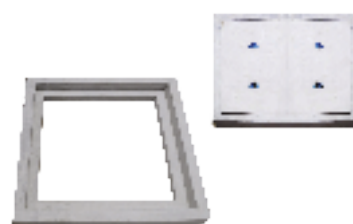
Undersunk hook



1. Heavy duty Round Chamber Covers good for Fire Tenders
2. M40 concrete heavily reinforced
3. Form work of FRP and vibrated on table
4. Undersunk hook provided for lifting



Opening Size - 1200x1200 mm
Cover Size - 1350x1350x75 mm
Frame Size - 1500x1500x125 mm



Opening - 1000x1000 mm
Cover Size - 1150x1150x75 mm
Frame Size - 1300x1300x125 mm